

DOWNTOWN STREETSCAPE MASTER PLAN

3-27-23 PROJECT UPDATE

CITY OF
DOUGLAS

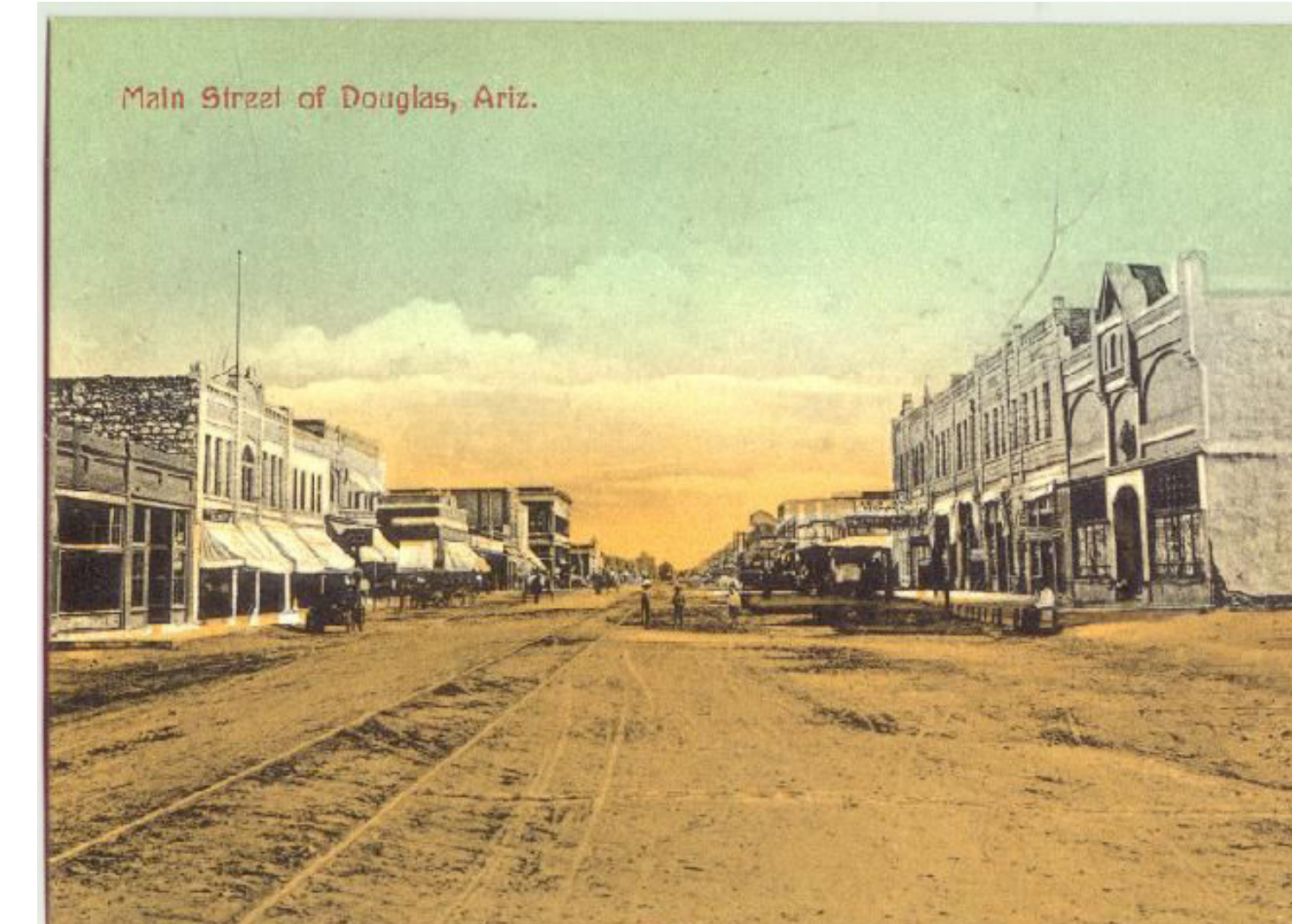


THE HEART OF DOUGLAS

City of Douglas

Cochise County, AZ

- Mexican-American border town
- Spanish Conquistadors previously established presidios throughout the region
- Founded in 1901, incorporated 4 years later on May 15th, 1905
- Population: 15,000
- First Established as a smelter site for the copper mines in Bisbee (The Copper Queen & The Calumet and Arizona)
- Many cattle ranchers settled on the area's open grassy lands in the late 1800's
- Local economy thrives off mining and agriculture
- Was once a section headquarters for the El Paso and Southwestern Railroad (Train station now City Police Department Headquarters)
- Host to 3 Army camps
- Residents had a passion for aviation and built an airport where many aerals first took place
- Despite the battles that occurred during the Mexican Revolution in Agua Prieta, a Mexican town across the border, Douglas relies heavily on border trade to support its growing economy since the closing of its last smelter in 1987.
- The two towns embrace the union of their cultures
- Rich Native American History; influenced by figures such as Geronimo and Cochise

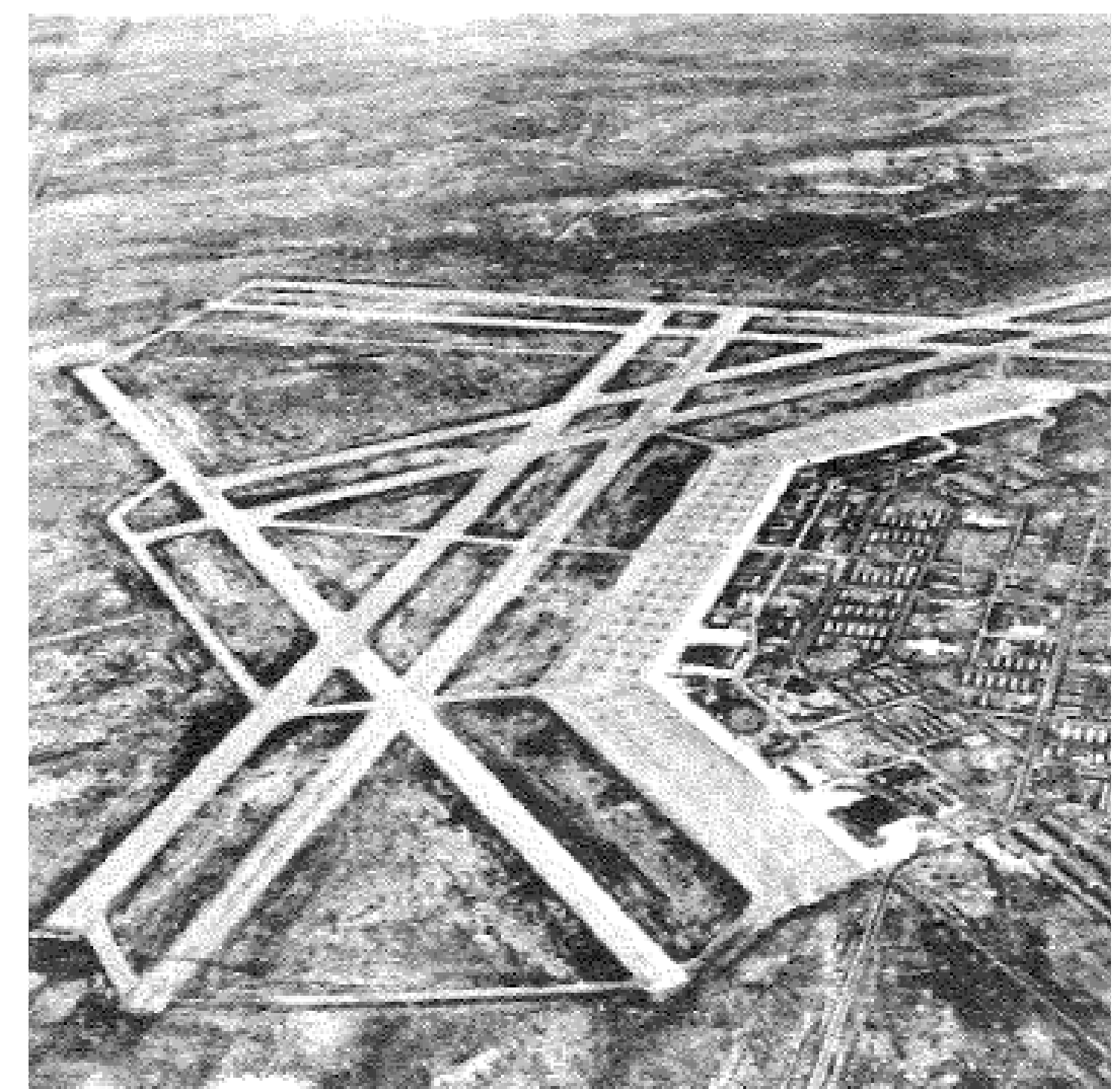
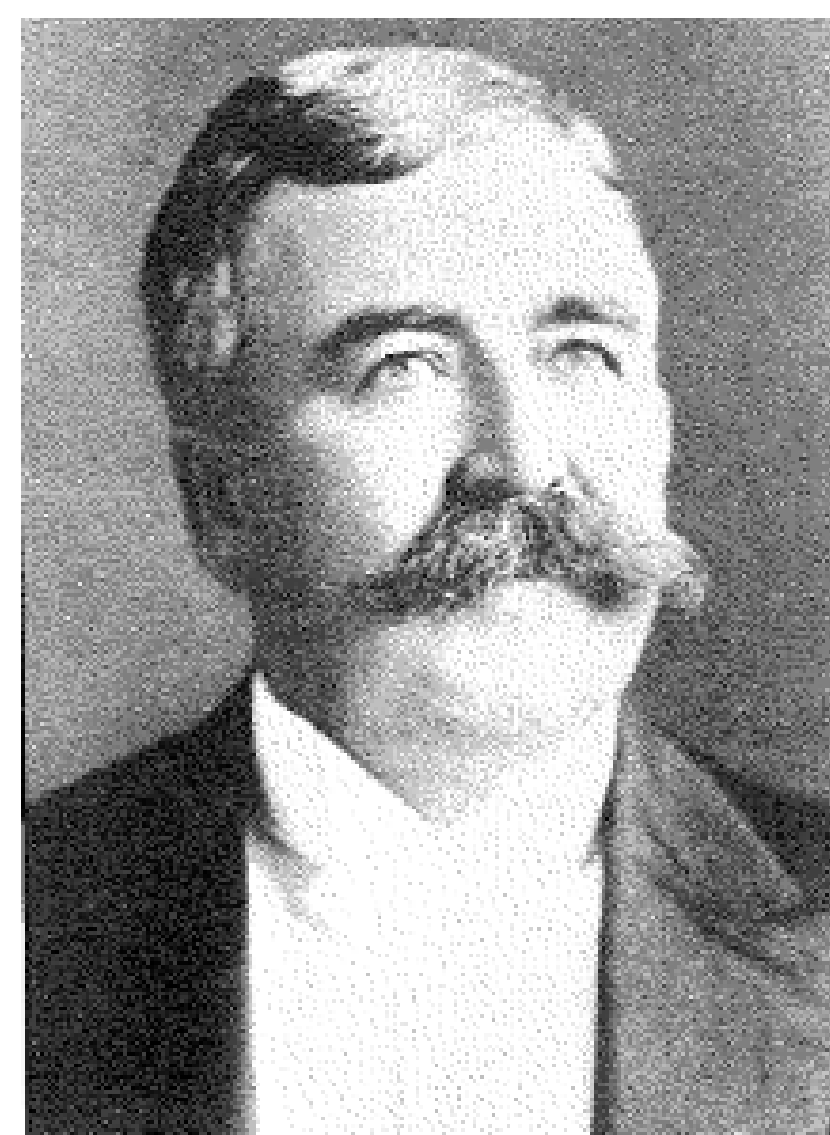
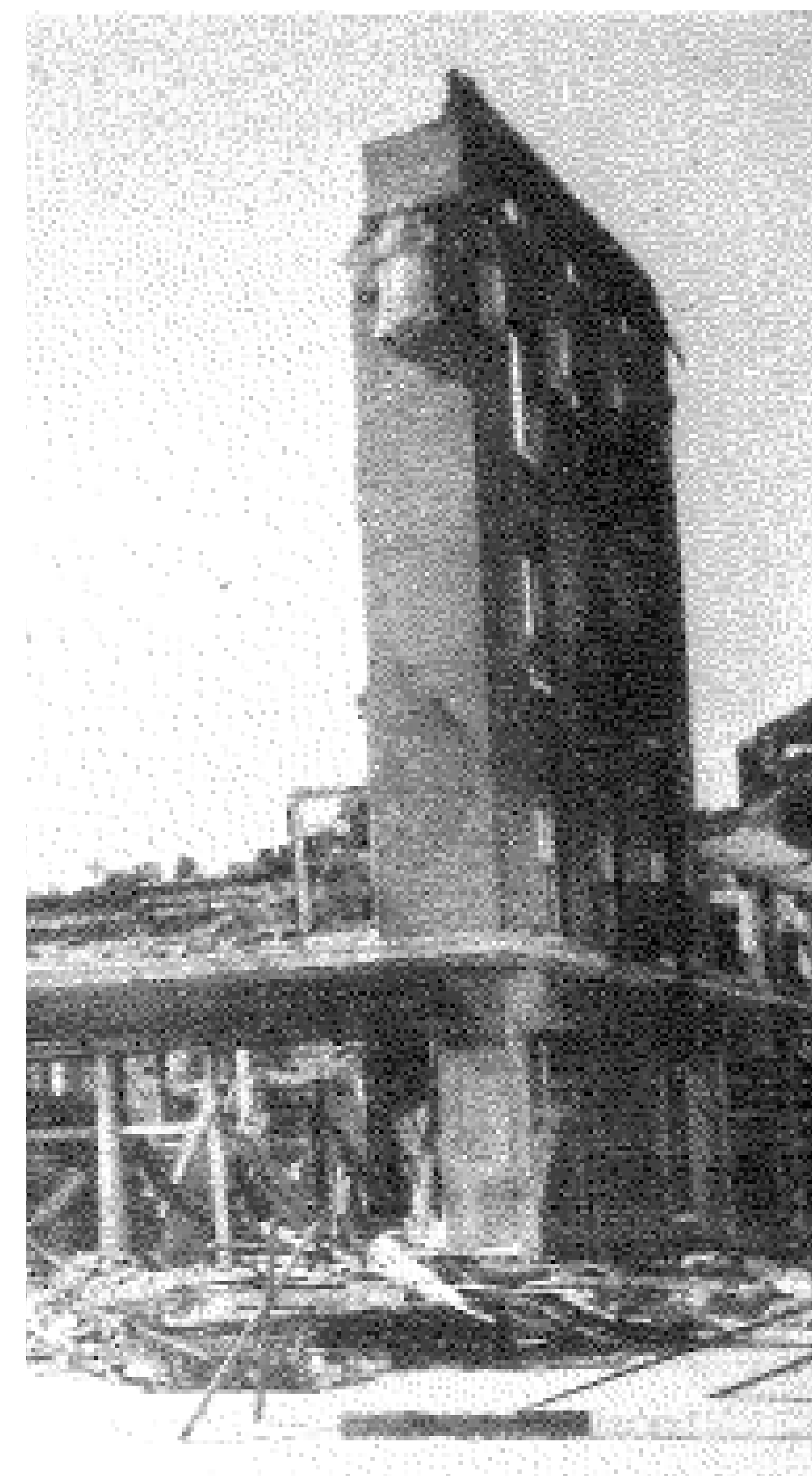
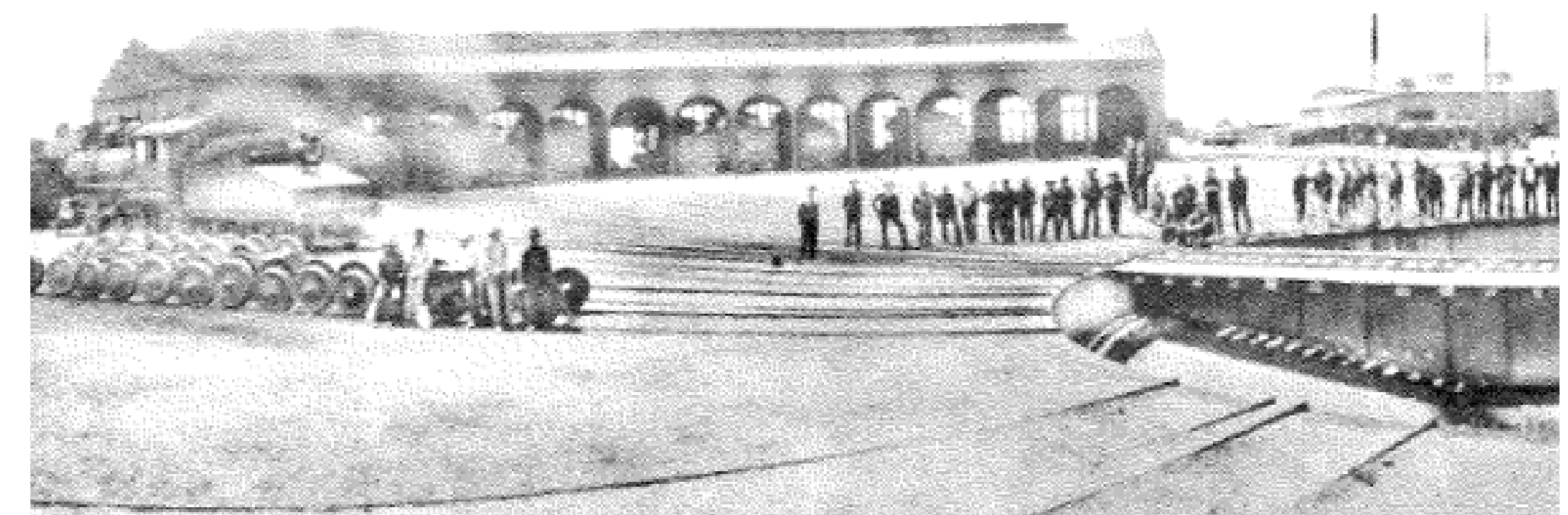
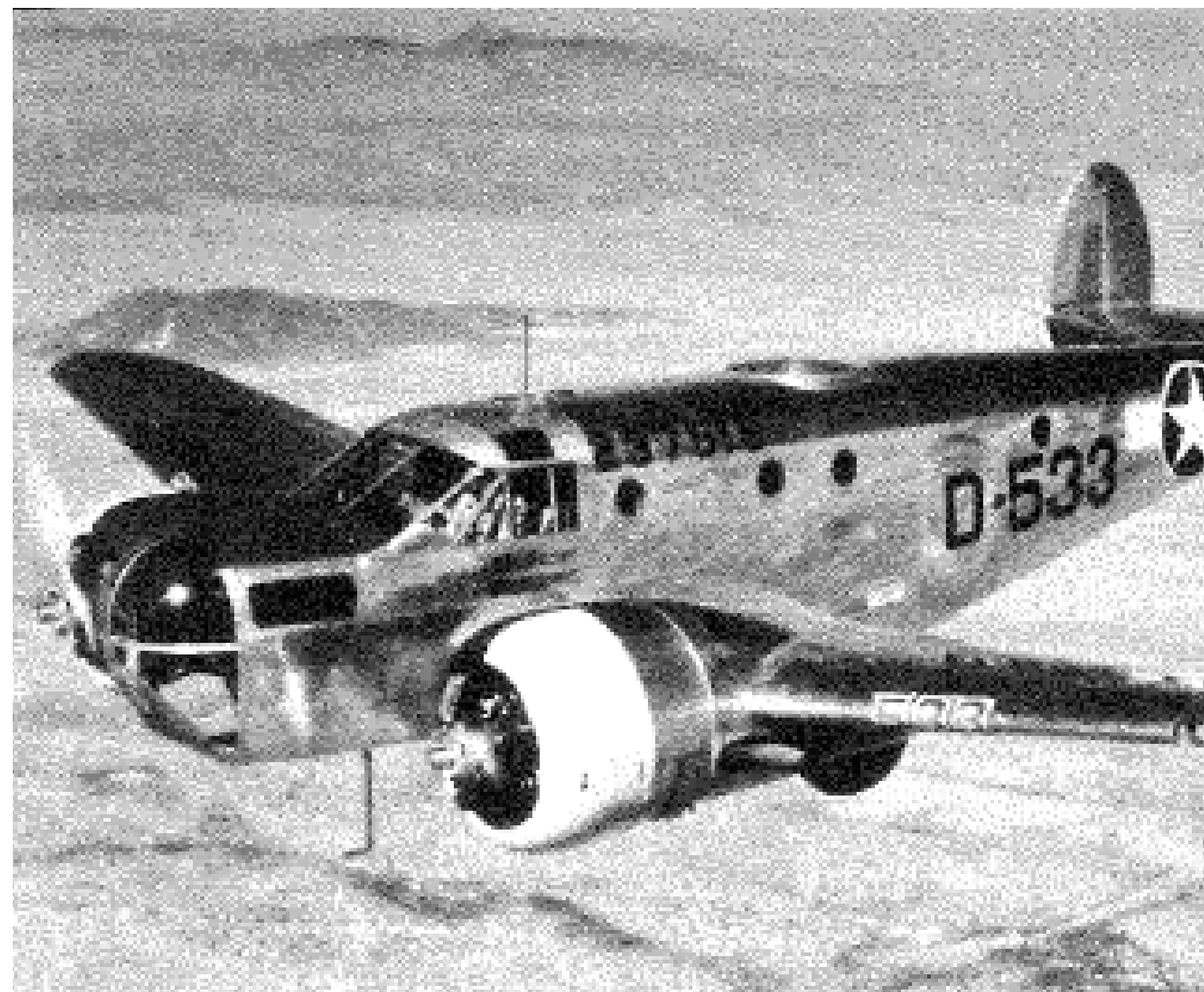


March, 2022

City of Douglas

Cochise County, AZ

- Charles Overlock, the town's first postmaster and member of the early school board, served as the first Mayor of Douglas until William Adamson, former Copper Queen Supervisor, became the first elected Mayor.
- Douglas Army Air Field was built 10 miles north of town in 1942 as a twin-engine flight school for officers assigned to bombers during World War II. After the war, this site became Bisbee-Douglas Airport.
- In 1913 Douglas was calling itself "Auto Town of the Southwest" because it had over 200 automobiles. At this time, automobiles were still sharing the streets of downtown with horse-drawn wagons.
- Douglas became a site for locomotive and car servicing facilities as it was a main stop along the El Paso and Southwest Railroad.
- The original Gadsden hotel burnt down in 1928 but was rebuilt the year after with an additional floor and the entrance facing G Ave instead of Eleventh Street.

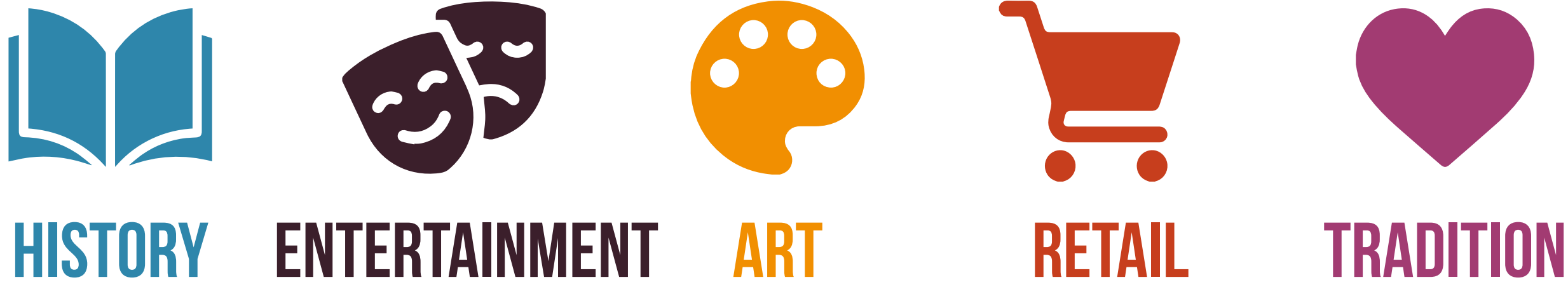
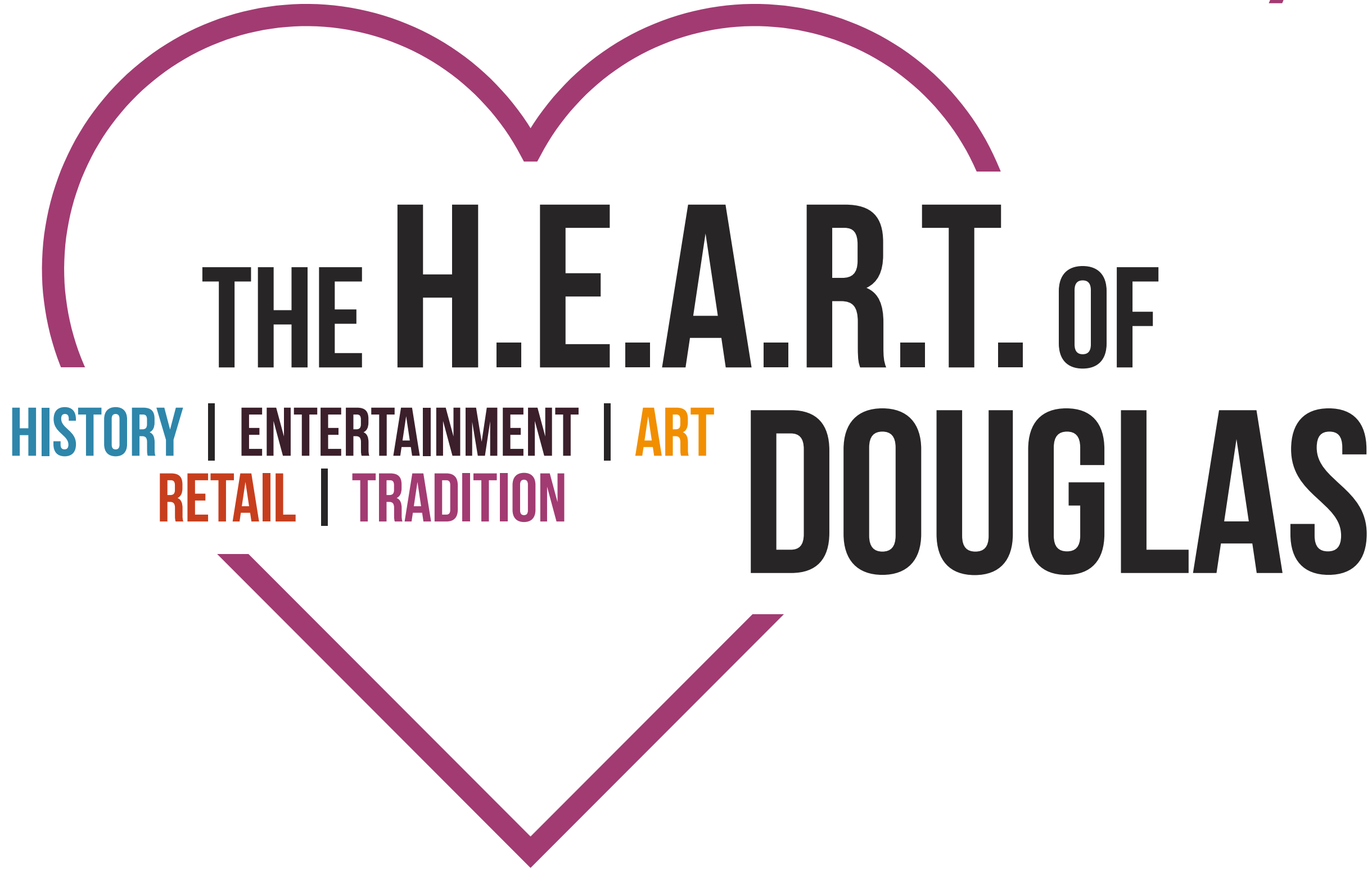
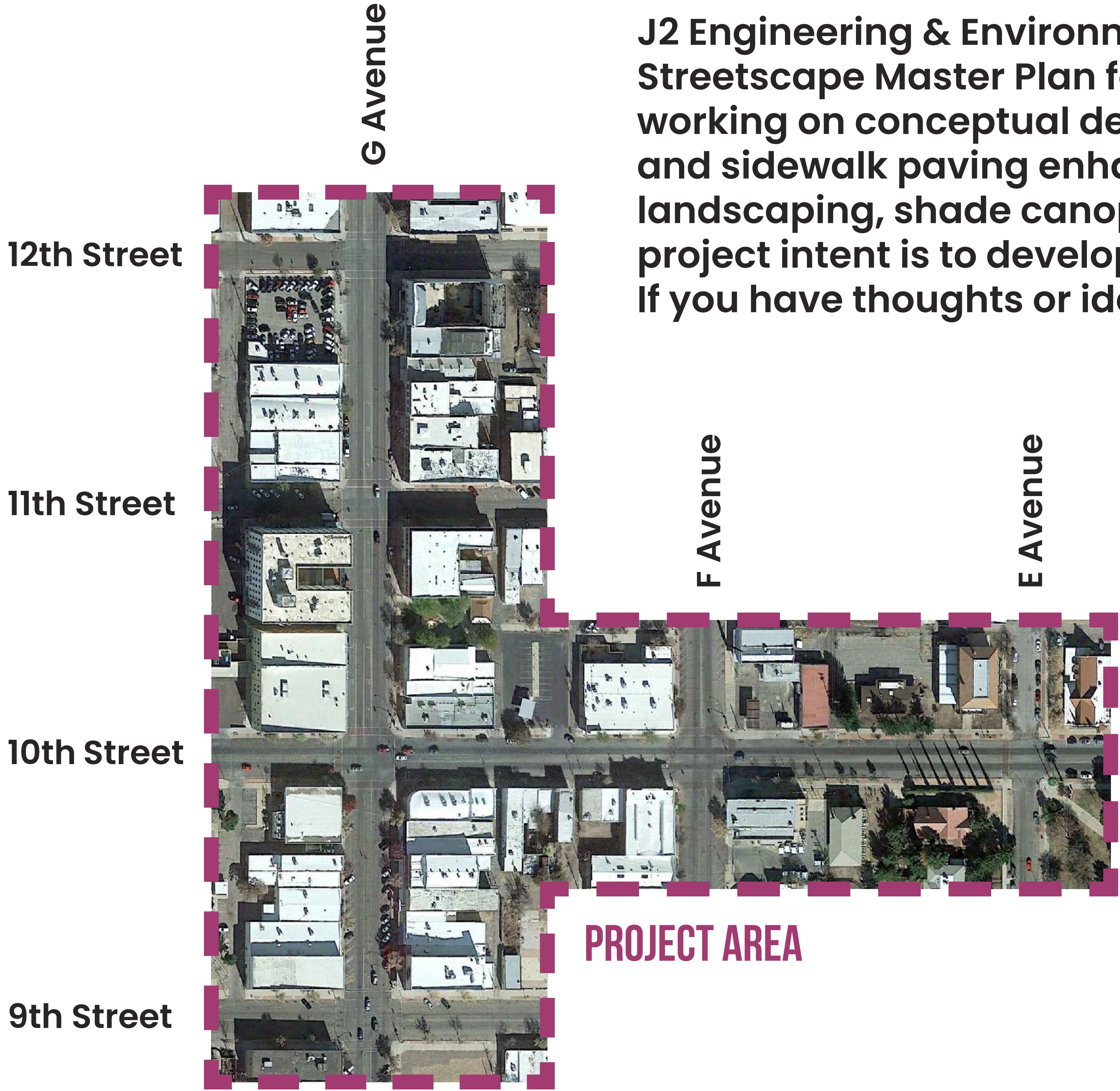


March, 2022

Downtown Streetscape Master Plan

J2 Engineering & Environmental Design has been selected to develop the Downtown Streetscape Master Plan for the City of Douglas. The Design Team is currently working on conceptual design for the streetscape system, which may include street and sidewalk paving enhancements, lighting, on-street parking improvements, landscaping, shade canopies and structures, artwork, and alley improvements. The project intent is to develop a vibrant, active downtown for residents and visitors alike. If you have thoughts or ideas that you would like to share with us, please let us know.

Thank you!



March, 2022



North



East



West



South



North



East



West



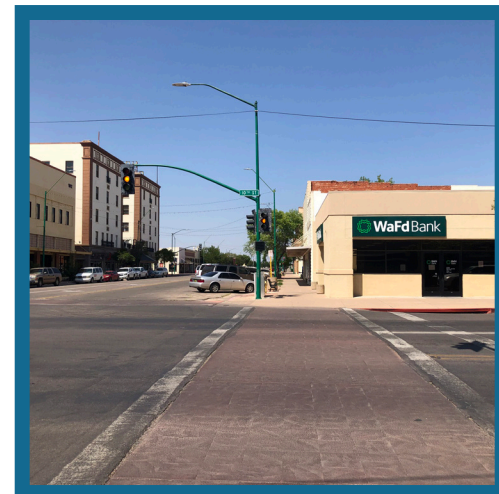
South



March, 2022



North



East



West



South



North



East



West



South



March, 2022



North



East



West



South



North



East



West



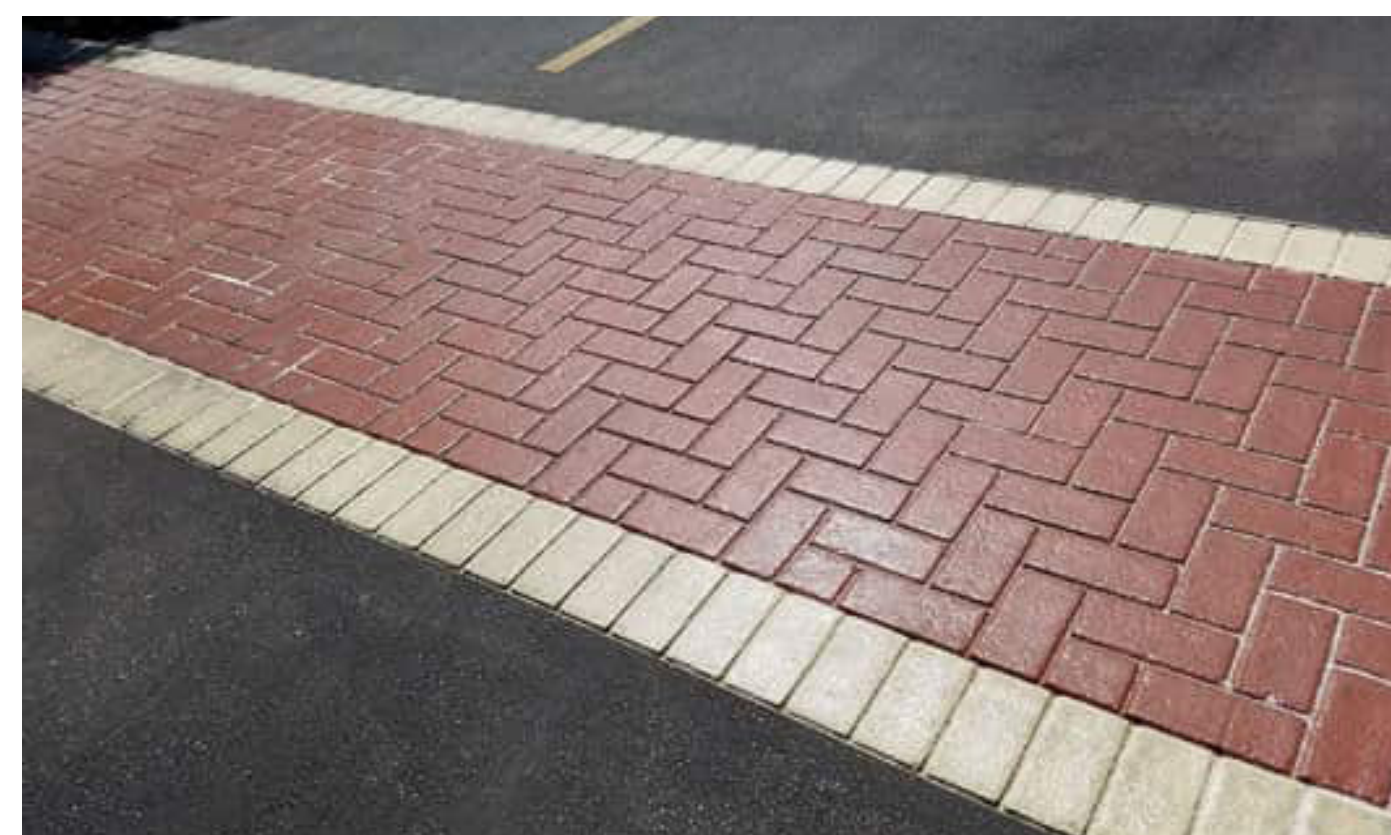
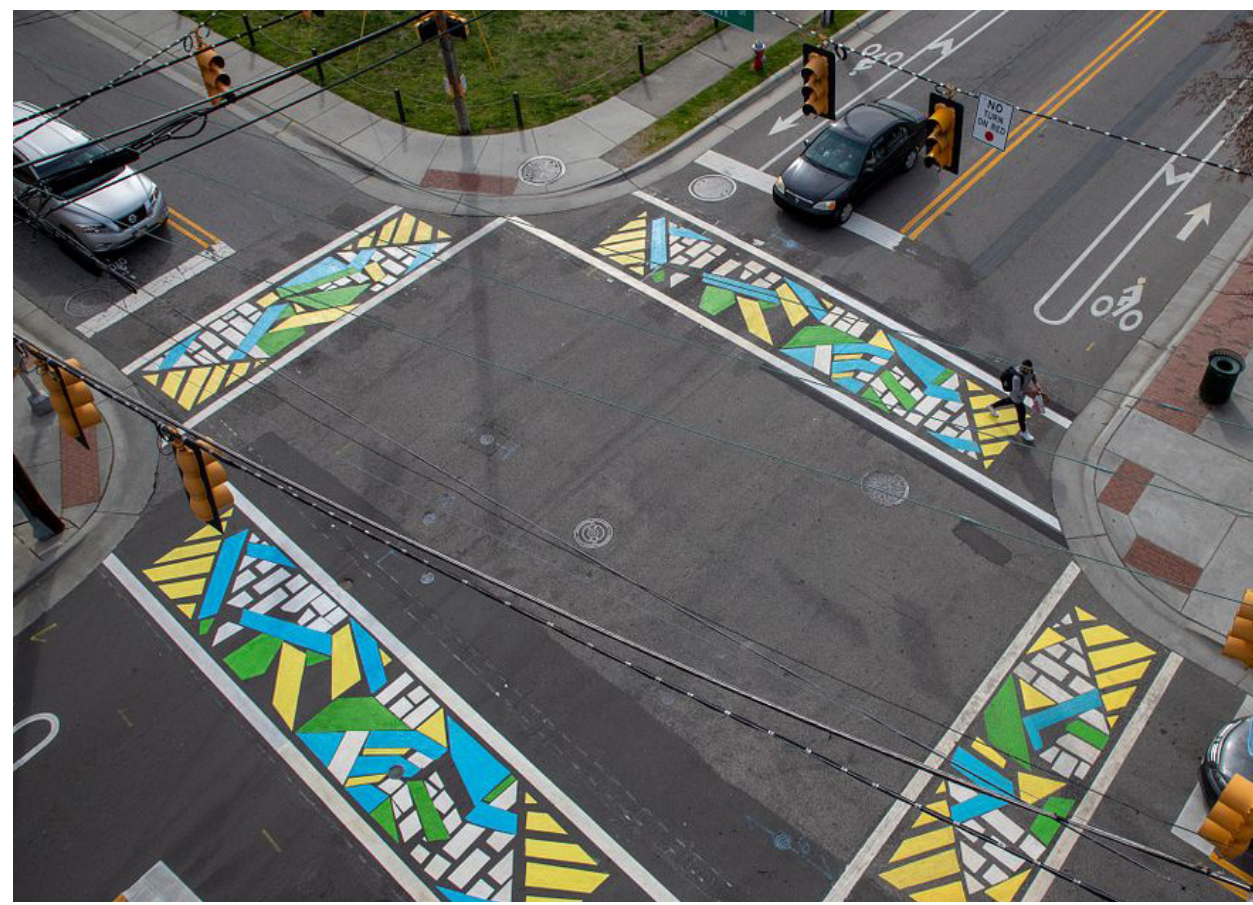
South



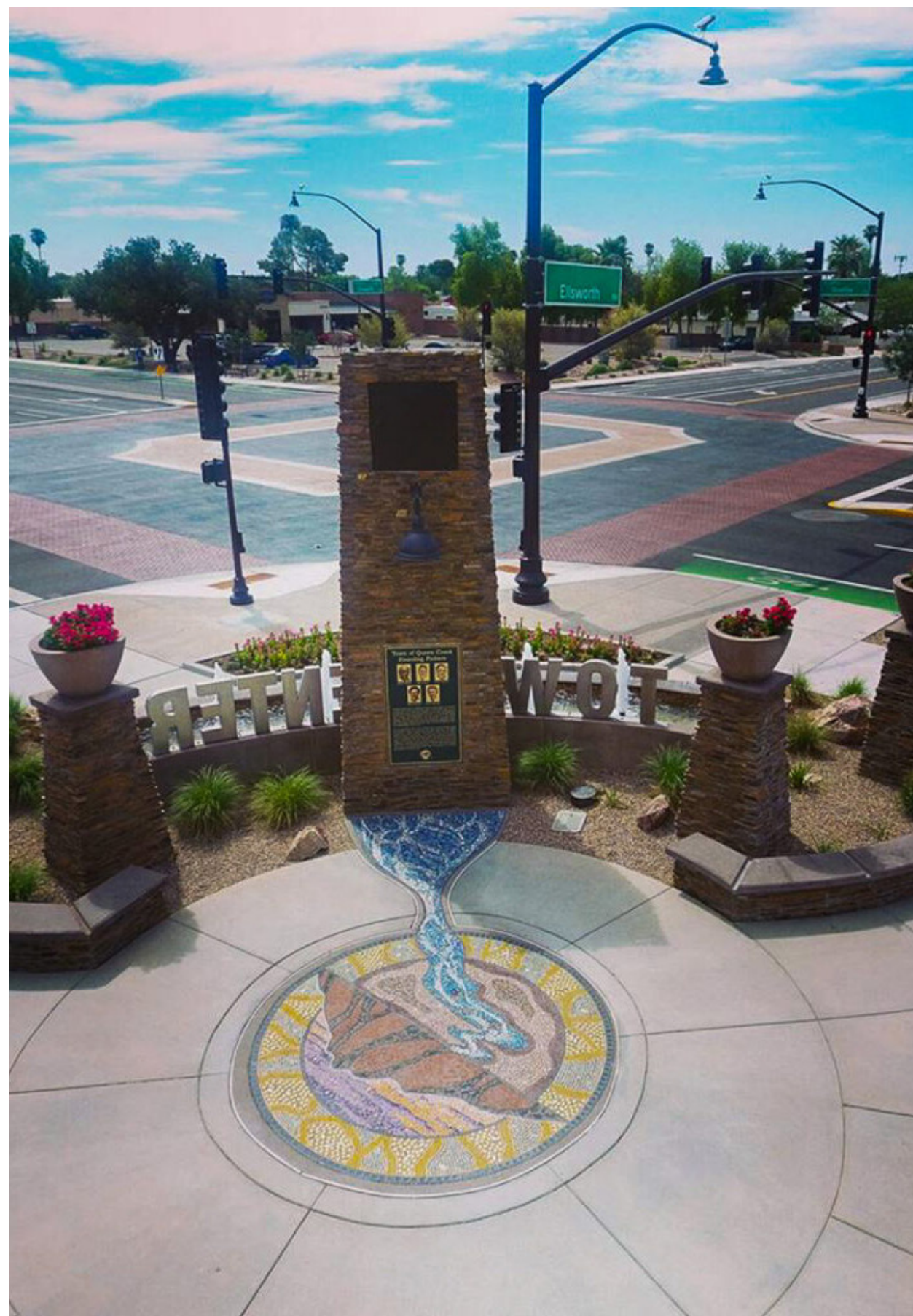
March, 2022



March, 2022



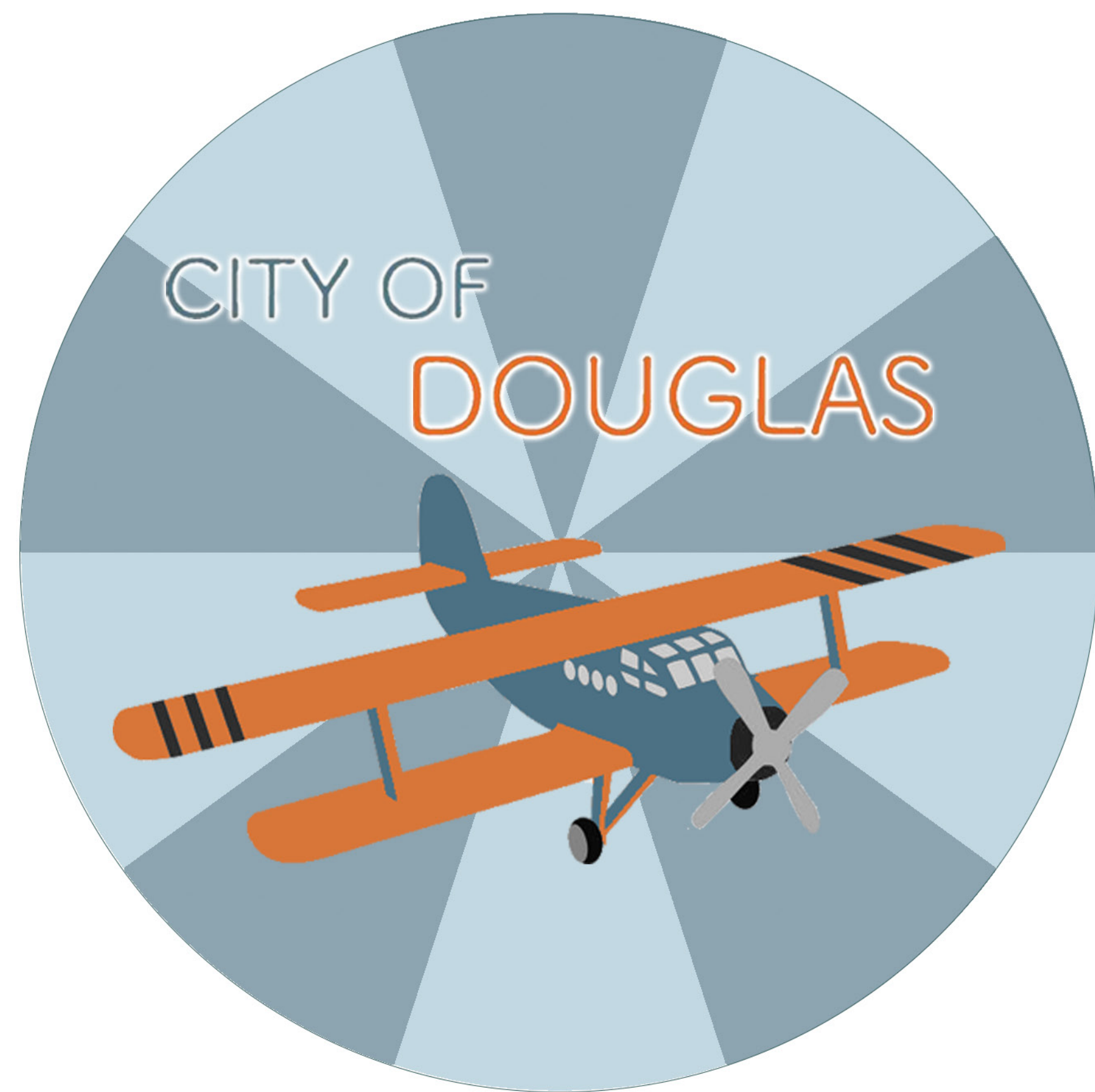
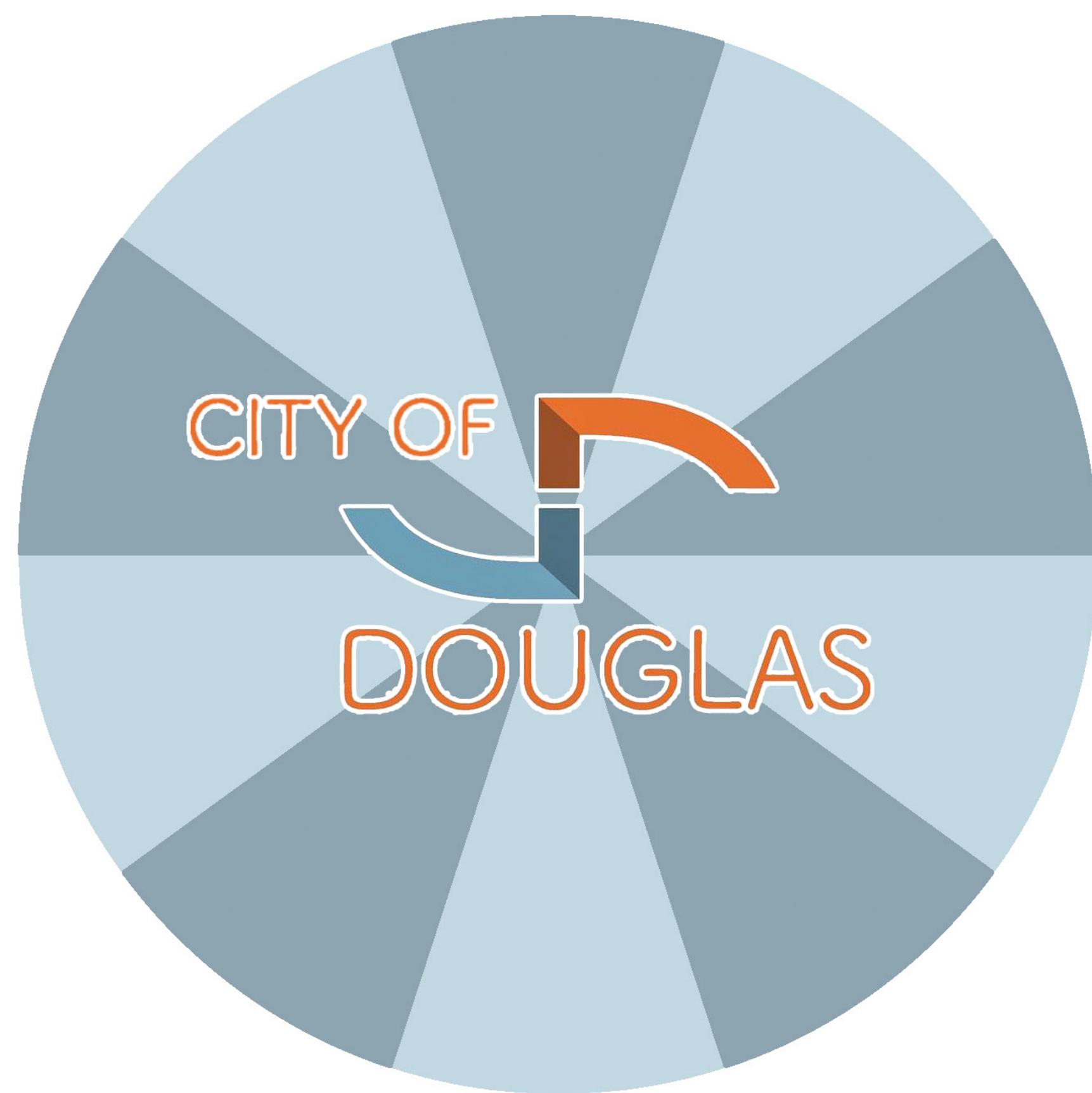
March, 2022



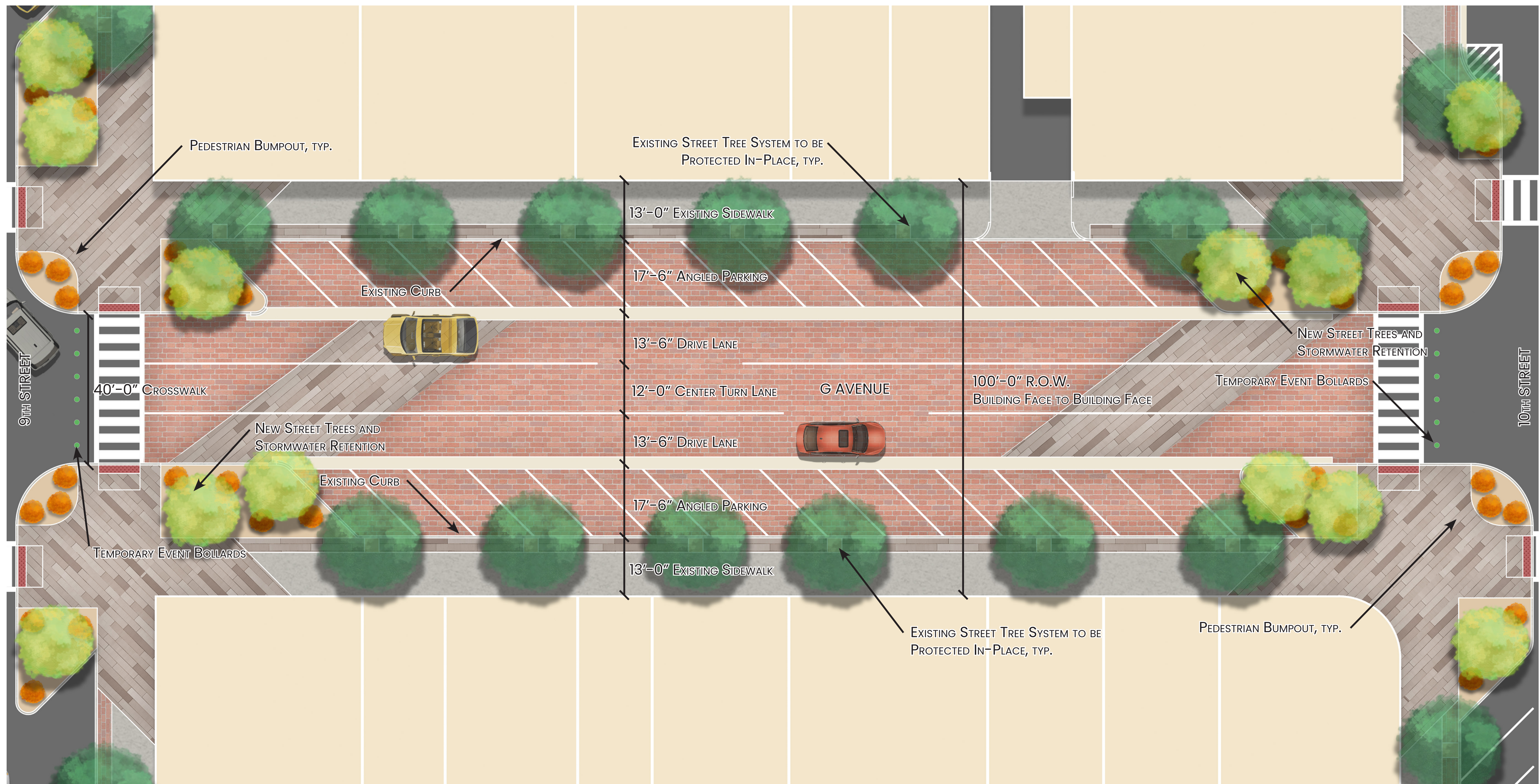
March, 2022



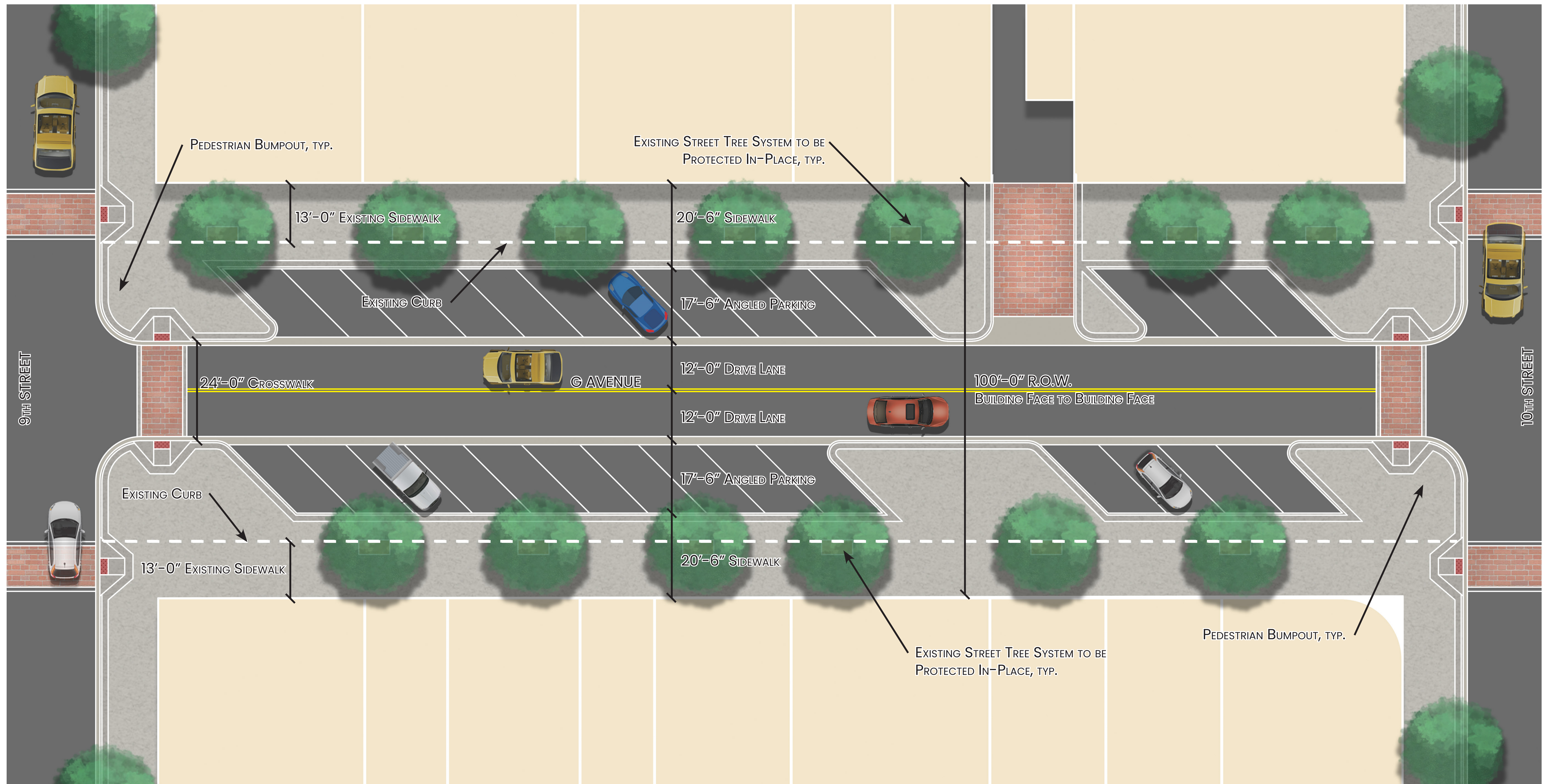
March, 2022



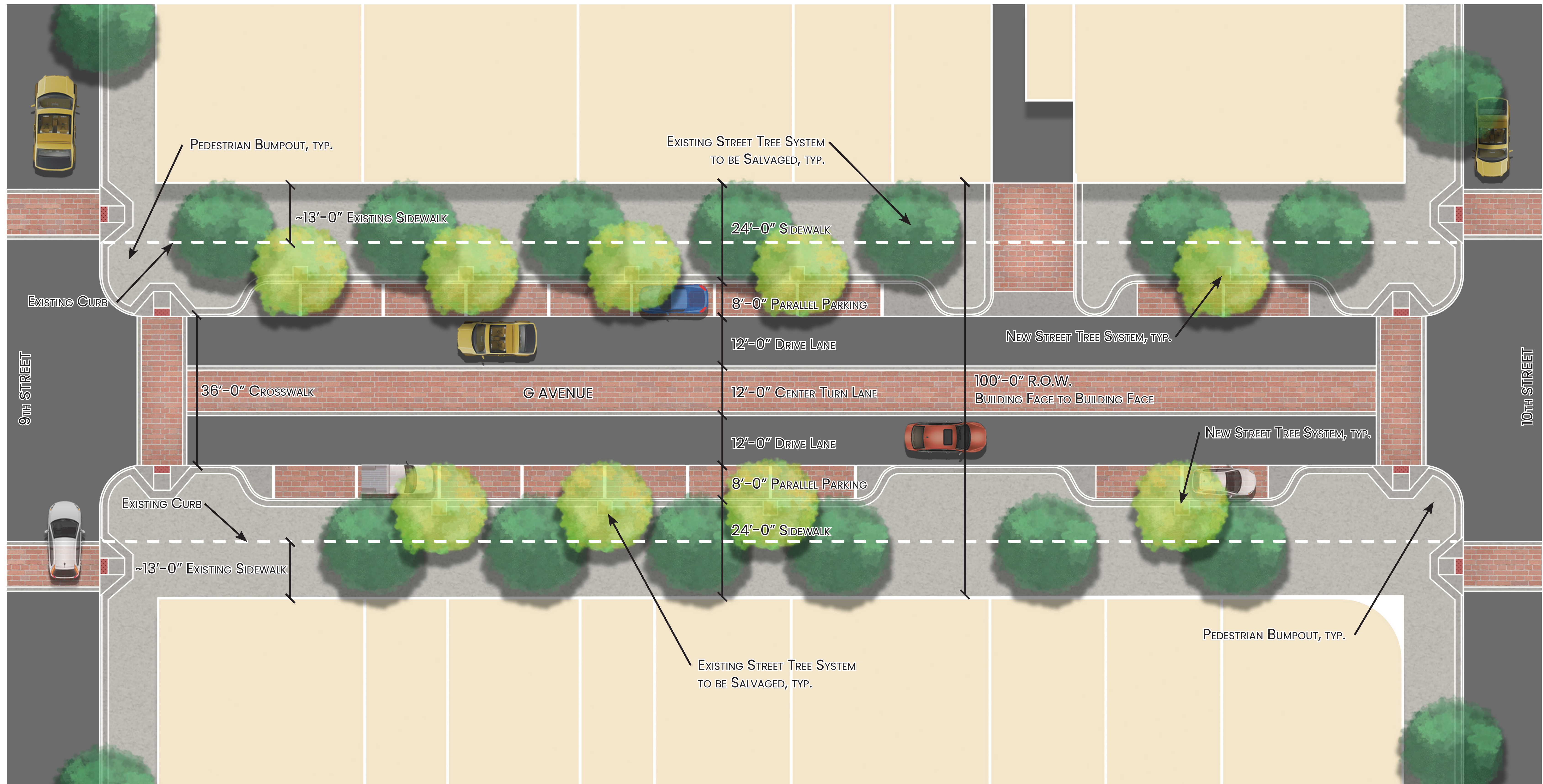
March, 2022



June 2022



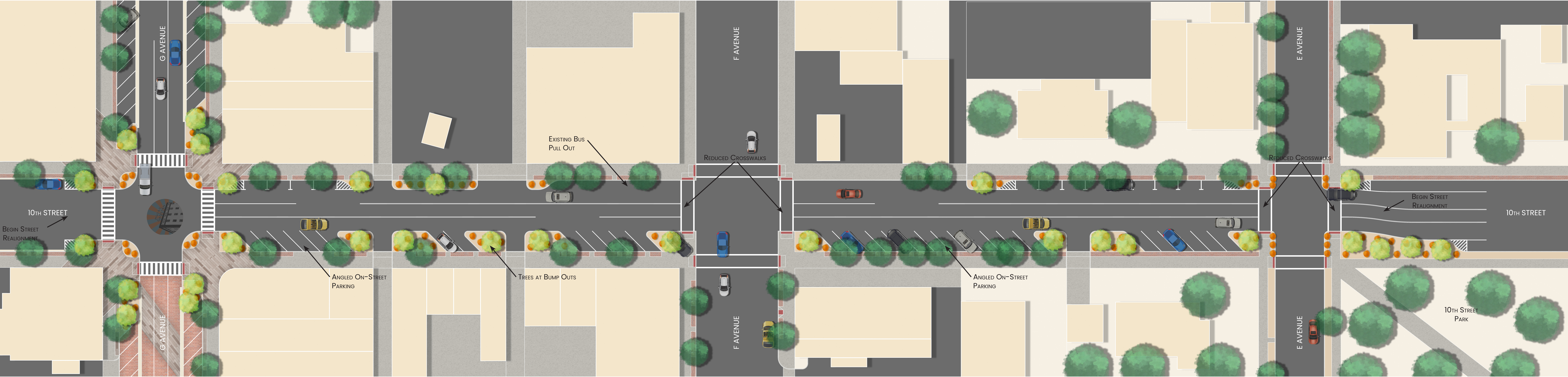
March 2023



March 2023

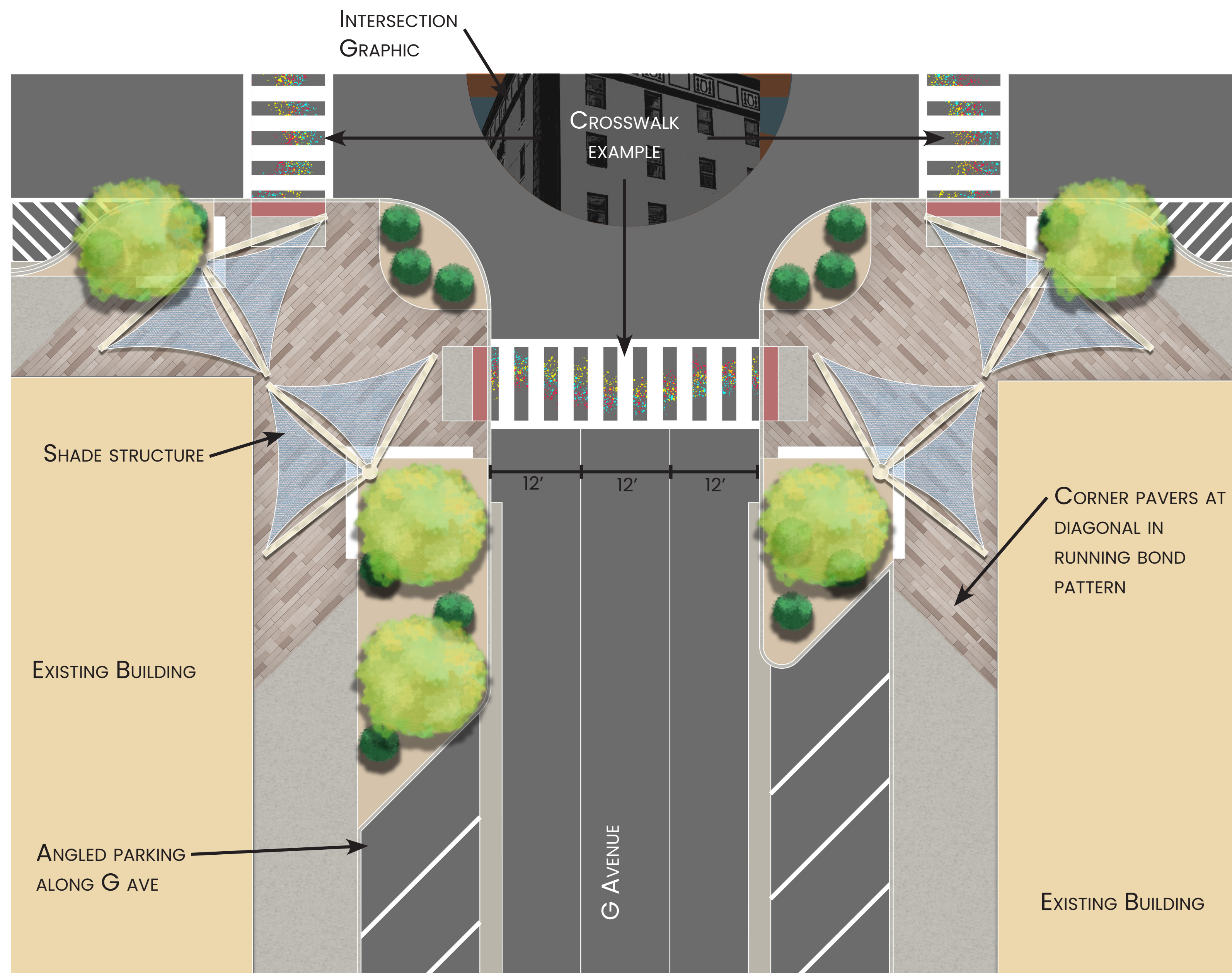


March, 2022

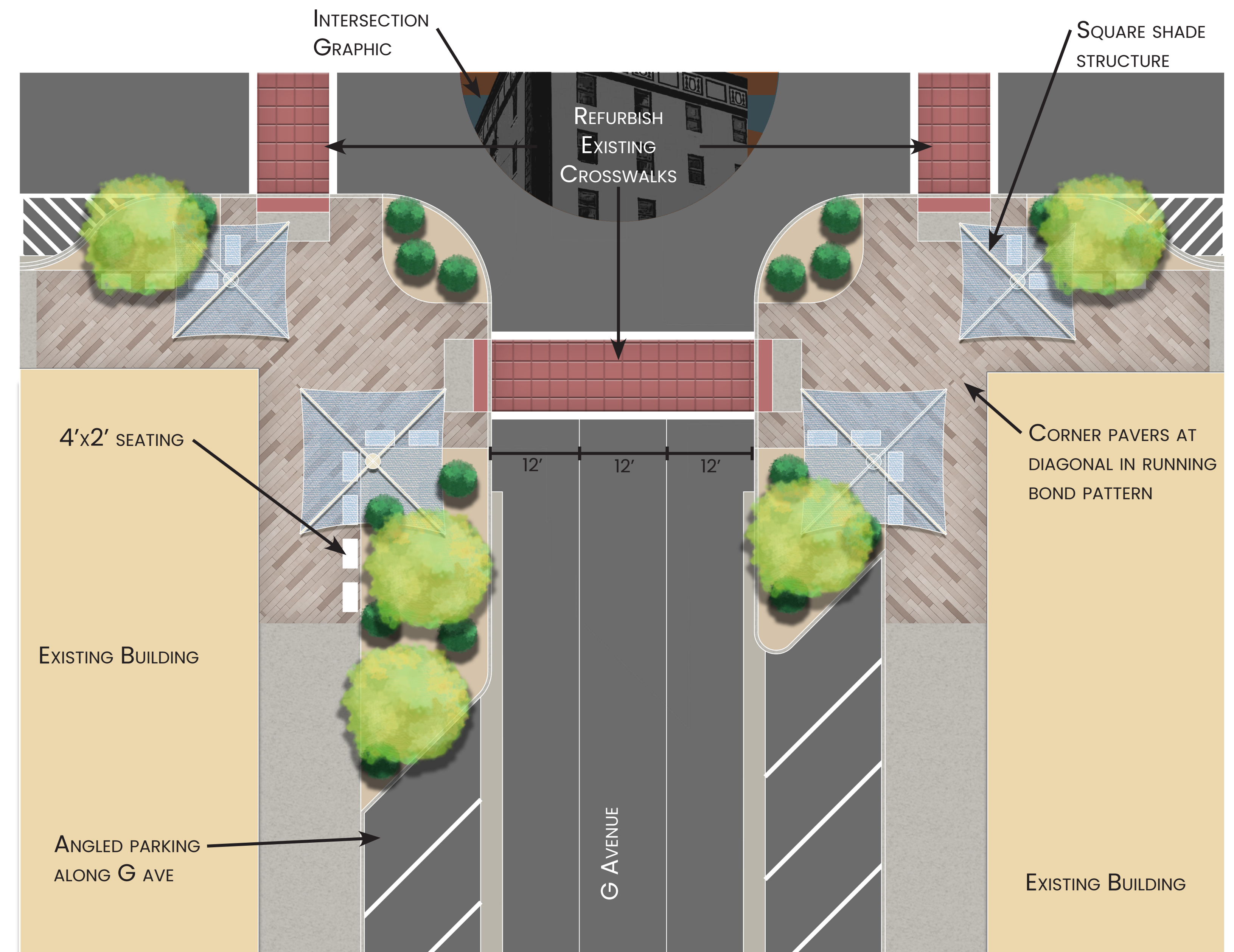


OVERALL PROPOSED PARKING: 45 STALLS
OVERALL EXISTING PARKING: 37 STALLS

March, 2022

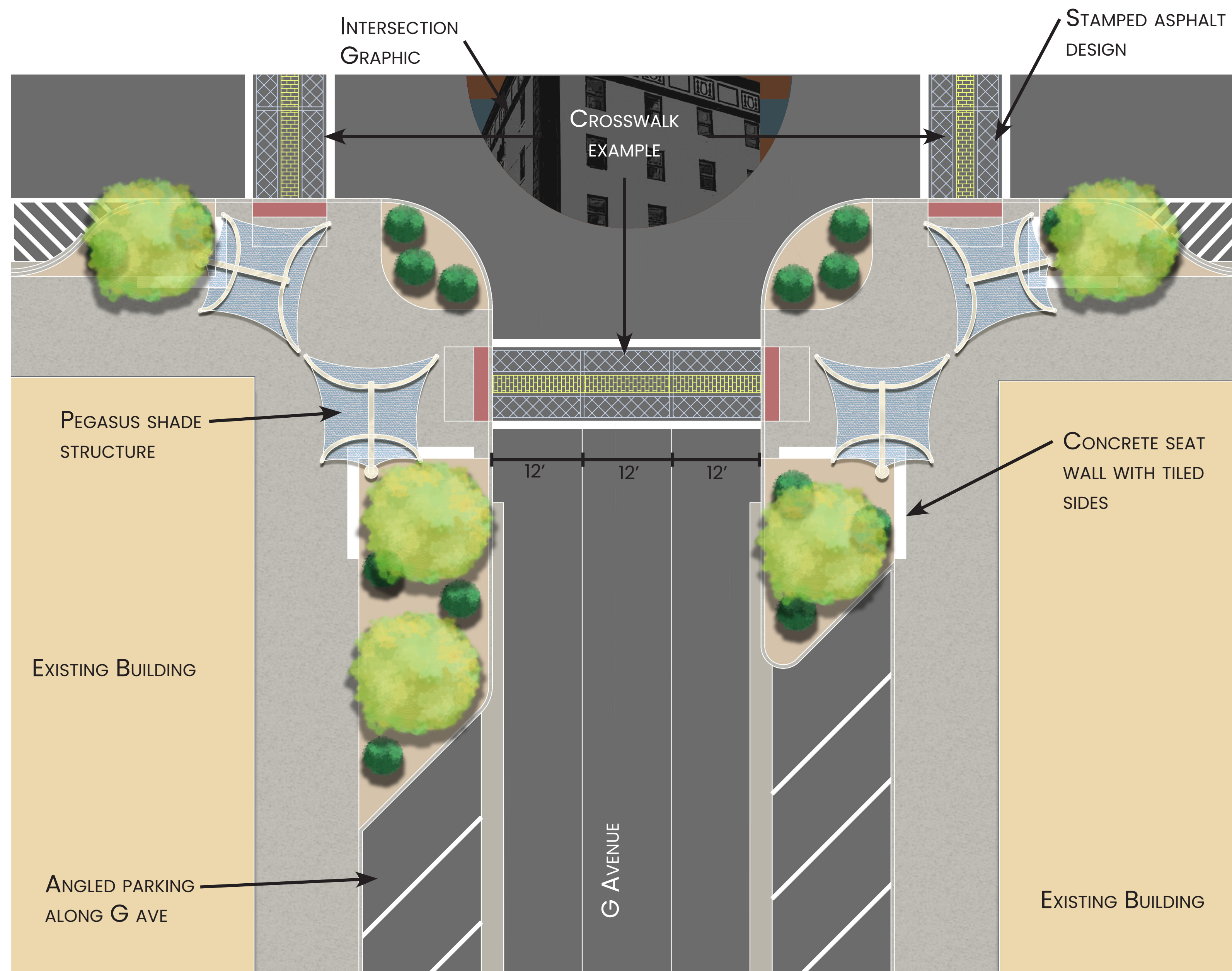


CONCEPT 1

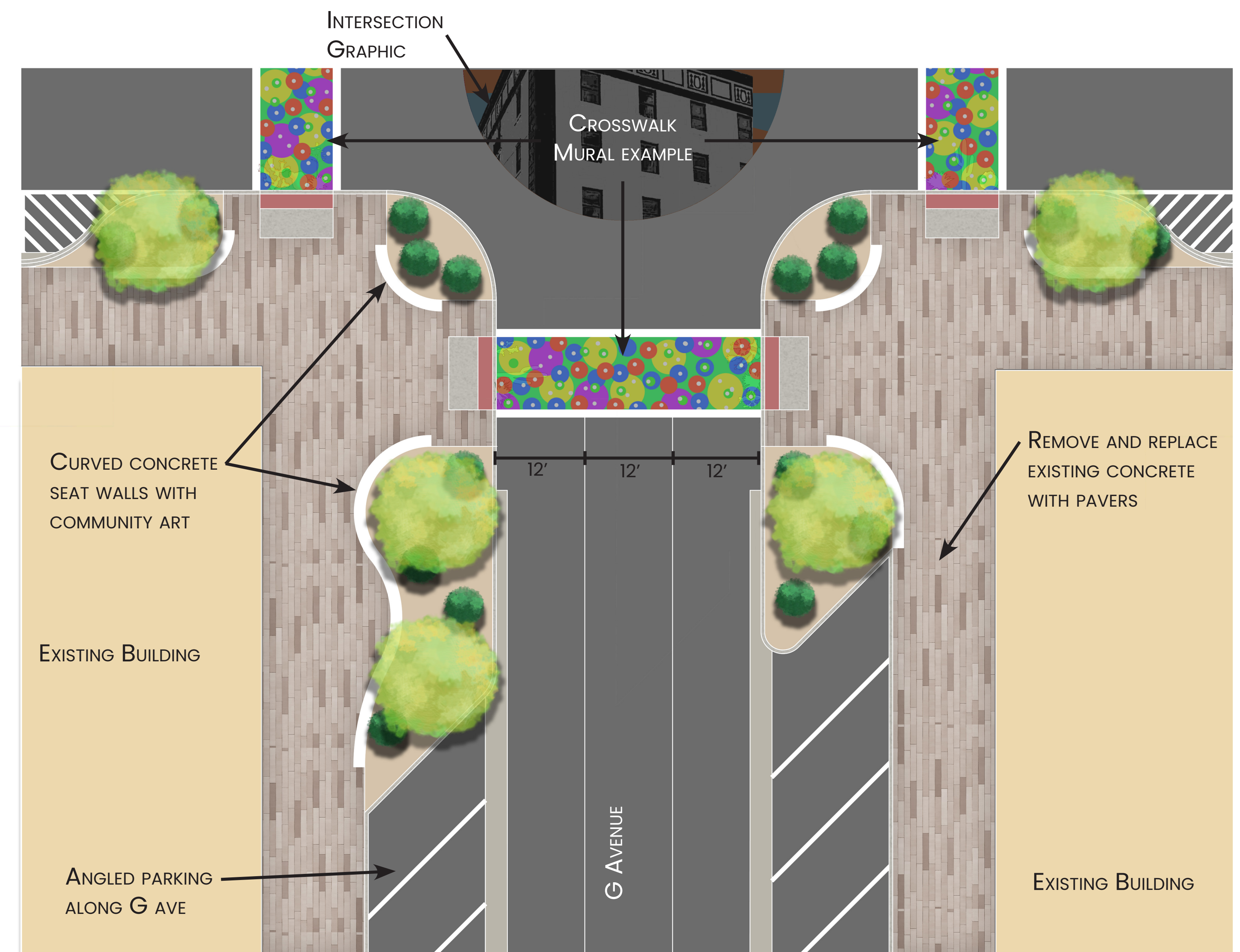


CONCEPT 2

March, 2022



CONCEPT 3



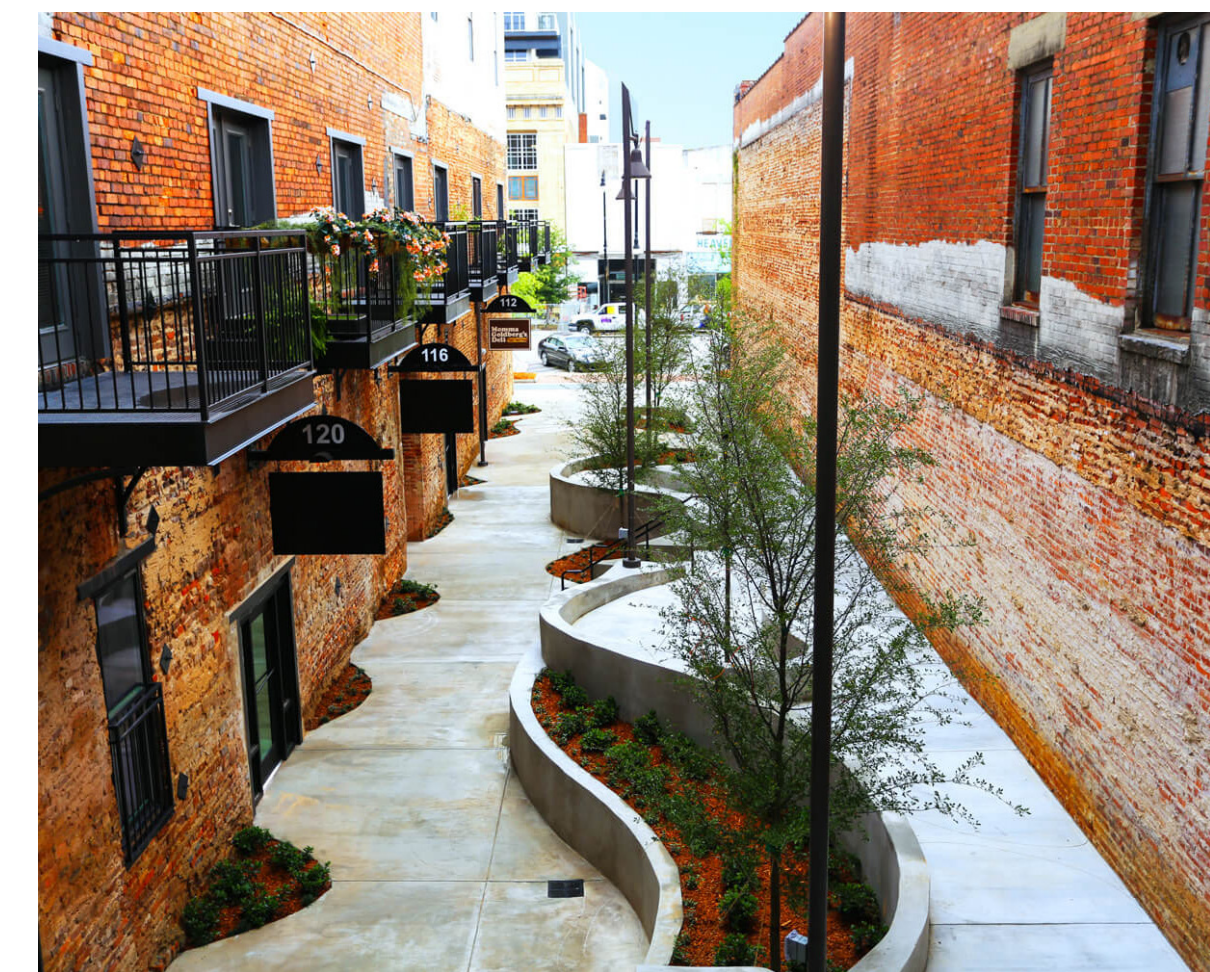
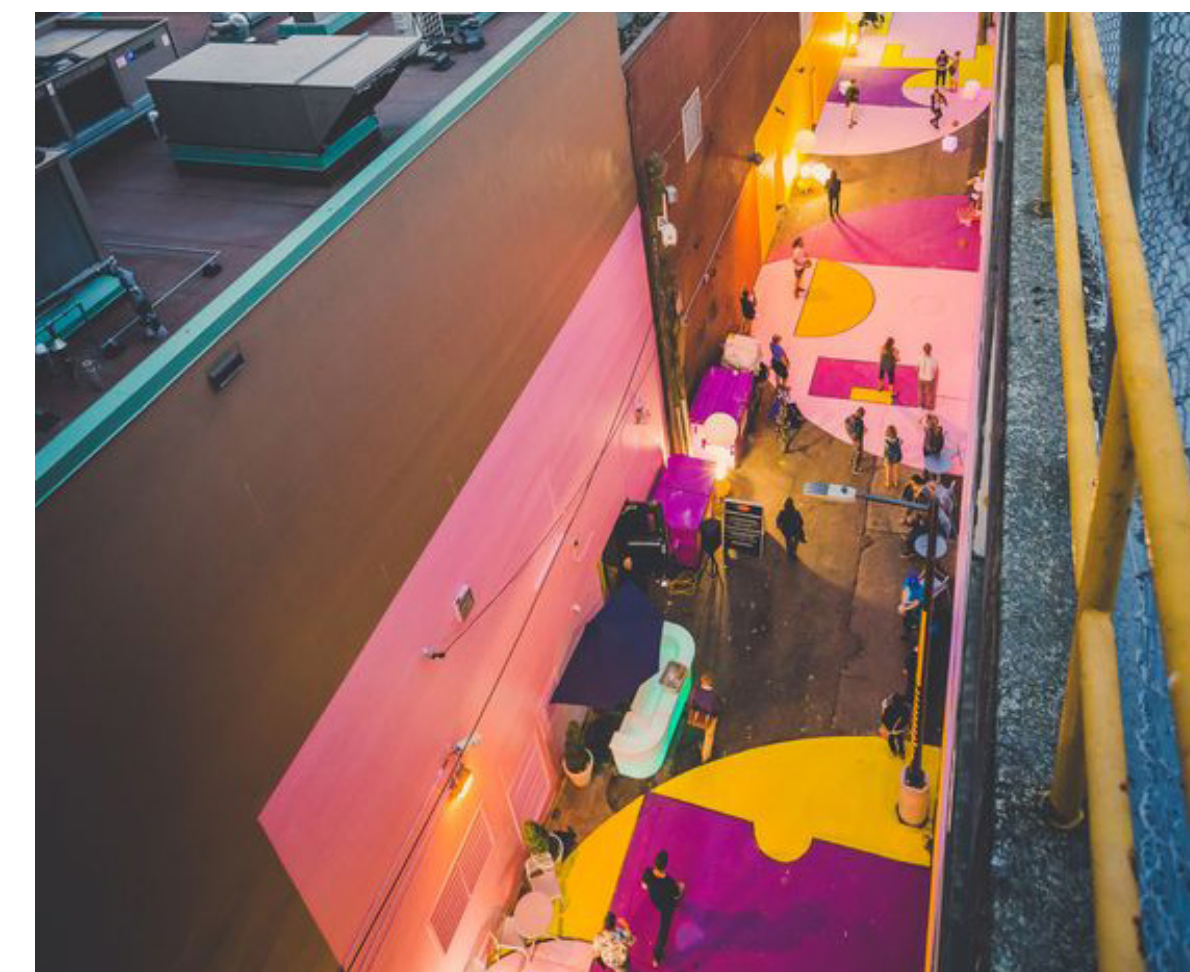
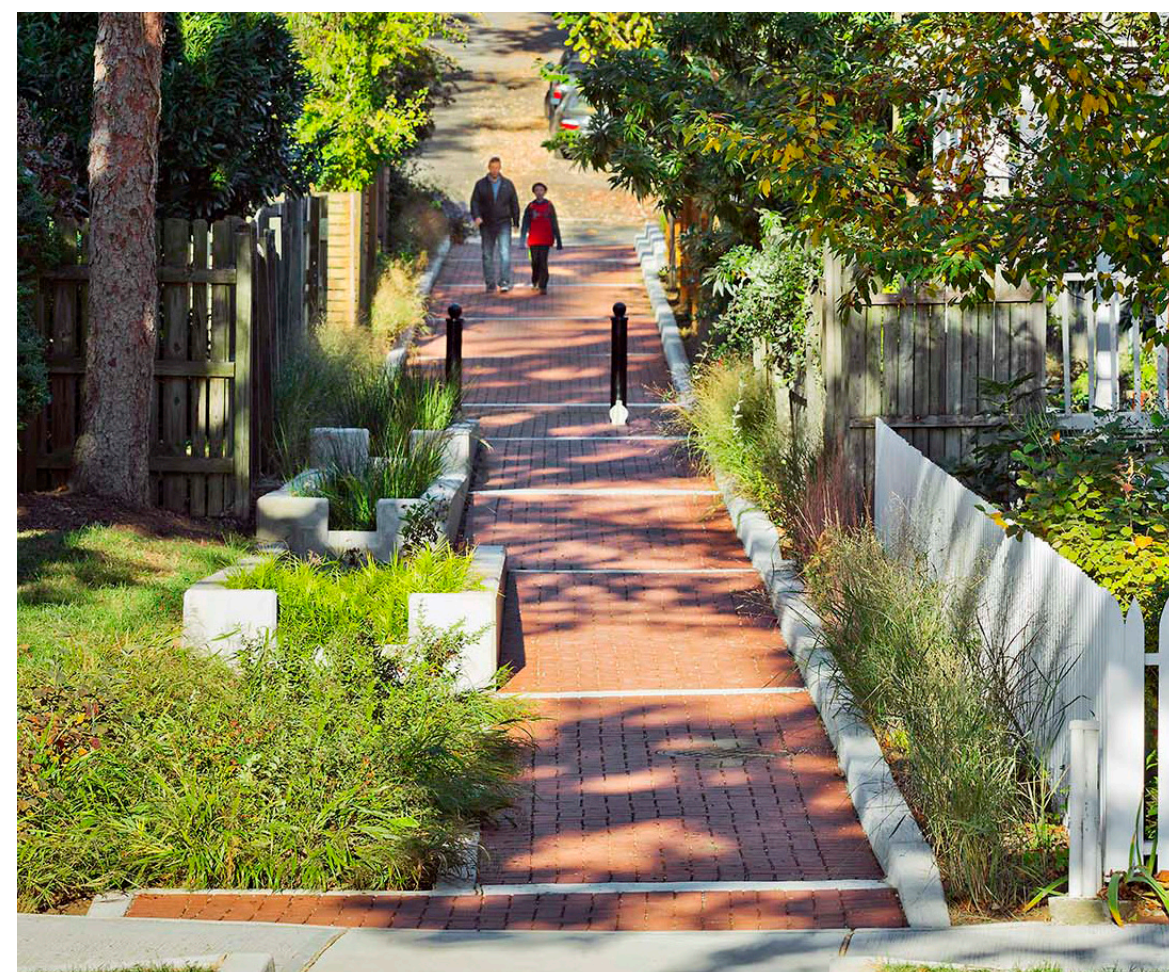
CONCEPT 4

March, 2022



- Primary Alleyway**
(Possible Improvements)
- Conversion to Pedestrian-Oriented Zones
 - Explore Possibility of Mid-Block Crossings
 - Installation of New Paver Systems
 - Festoon Lighting
 - Sidewalk Gardens
 - Signage & Wayfinding
 - Public Art
 - Seating & Active Frontages

- Secondary Alleyway**
(Possible Improvements)
- Maintain Current modes of Transportation
 - Pedestrian Level Lighting
 - Above Ground Planters



March, 2022

Monument Concept #1

APPROACH:
This concept is created of radiating horizontals into which 6' tall letters are integrated; "reaching out" and welcoming incoming traffic along G Avenue and Pan American.

The returns for each letter are an artistic expression of meaningful aspects of Douglas' history, architecture, industry, and culture.

- A** Uplit fabricated letters with deep artful returns.
- B** Angled support structures of brick or stone; substantial materials representing longevity and strength intersect and support each letter.
- C** Fabricated 'DOWN TOWN' letters - 36" tall on brick, concrete or stone bases.



Monument Concept #2

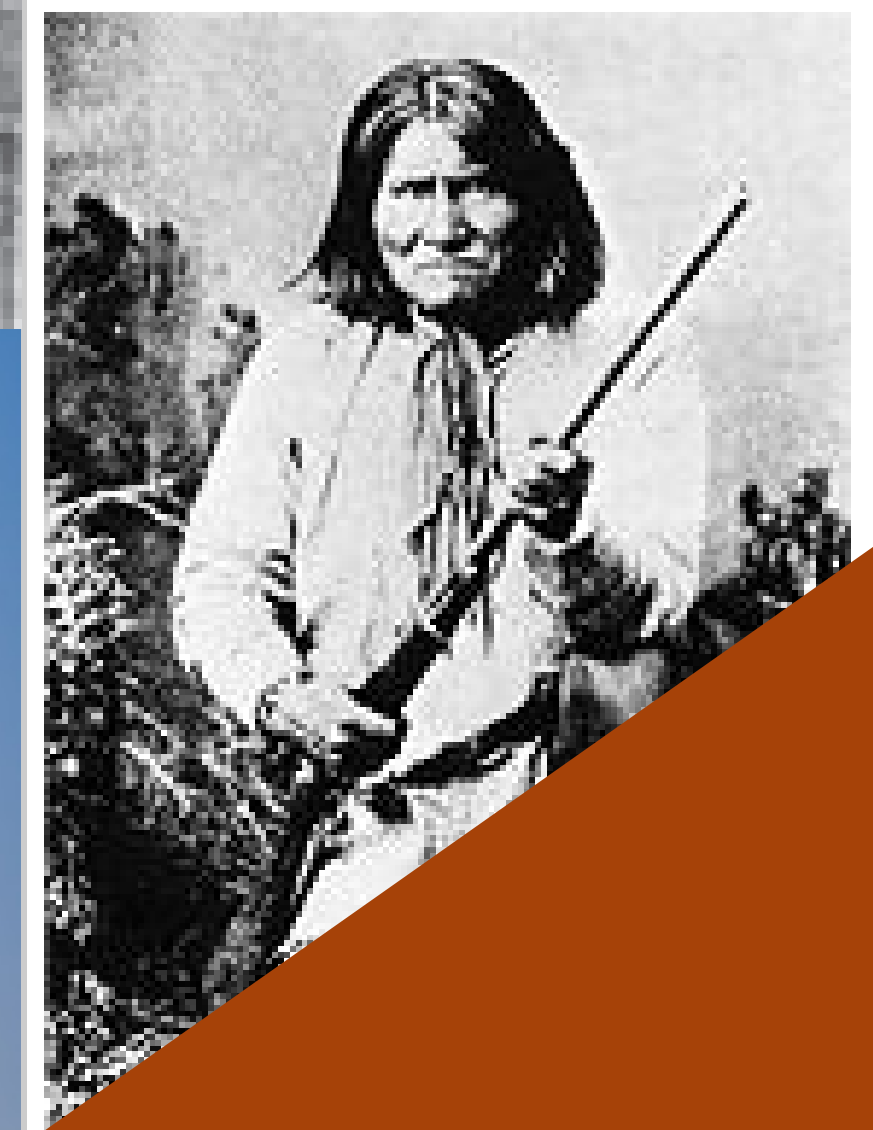
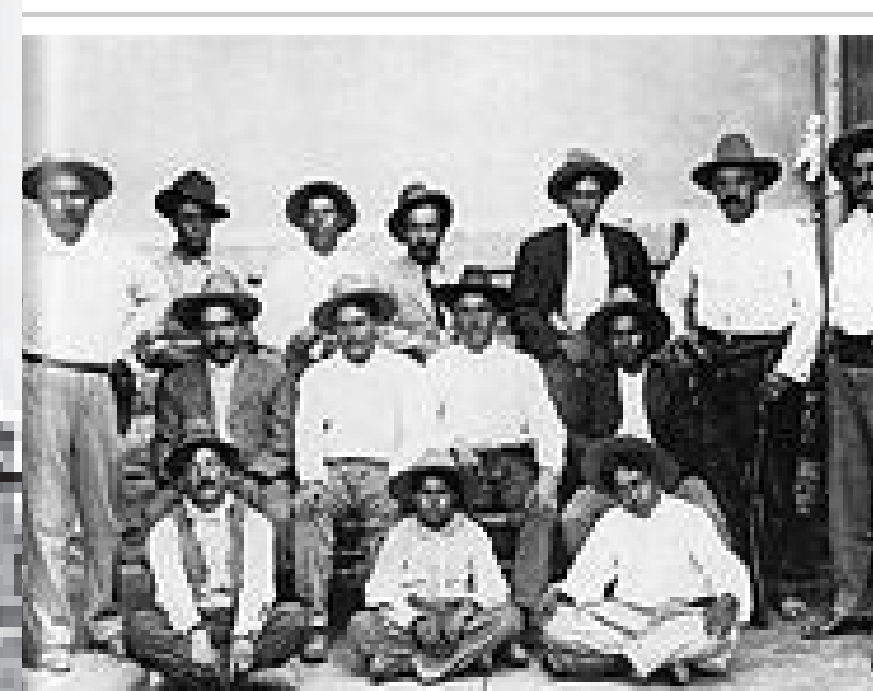
APPROACH:
This concept is reminiscent of much of the historic architecture that lines the downtown streets of Douglas; formidable, sheer facades embellished in a myriad of decorative elements and styles.

Vertical panels support "downtown" lettering - each an abstract, artistic expression of elements from Douglas' history, culture and natural environment.

- A** Support framework with i-beam uprights that intersect letters.
- B** Artistic panel compositions
- C** Fabricated letters supported by i-beams and outlines in neon lighting.
- D** Rough-face stone base.
- E** Dimensional lettering.



March, 2022



THANK YOU

CITY OF DOUGLAS



THE HEART OF DOUGLAS